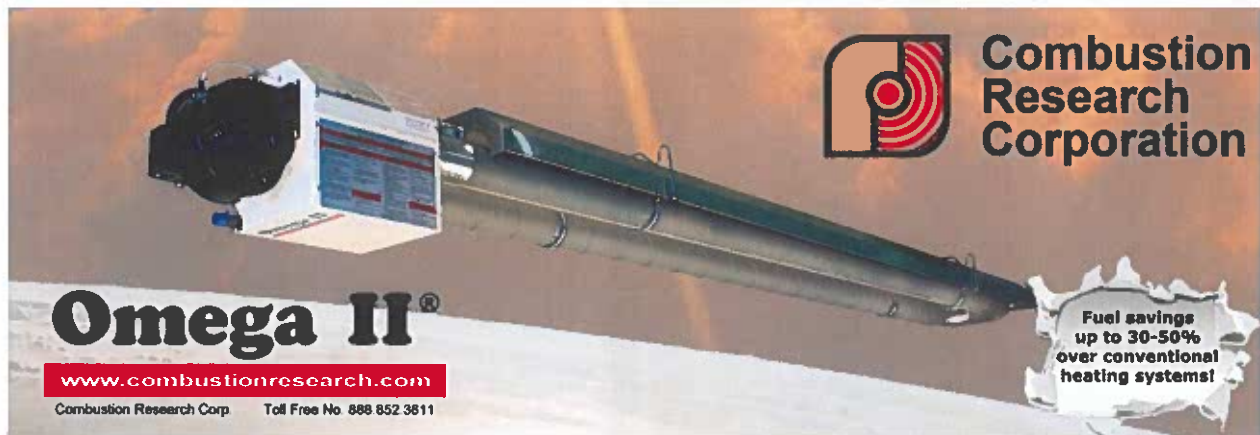




**Clover Corporation** *HVAC Equipment*  
*Your FAMILY owned HVAC Supplier*  
602 Tolland Street • East Hartford, Connecticut 06108-3728  
(860) 528-0081 (P) • (860) 528-9539 (F) • [Info@Clover-corporation.com](mailto:Info@Clover-corporation.com)

## LOOK UP TO OUTDOOR COMFORT



*Infrared heat* warms the chill of an early Spring outdoor venue. Your customers are in the know that restaurants who have been proactive and established outdoor dining are thriving. Offer them the opportunity to boost their revenue this Spring with an infrared system that's designed to meet their need.

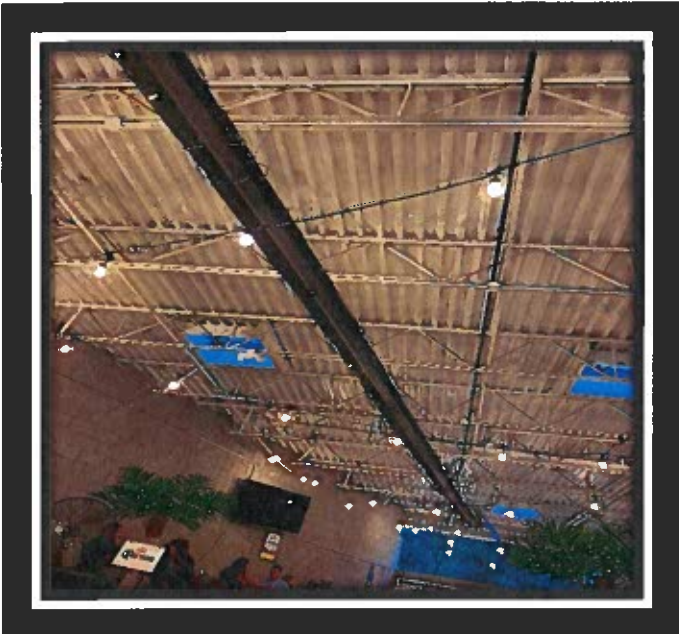
There are many different styles of heaters to choose from, both low intensity (tube type) and high intensity. We represent several manufacturers and can provide a system to meet many applications that would benefit and save \$\$\$\$. Ask us about a heat loss evaluation that will demonstrate the savings to your customer.

To determine the capacity for a gas-fired radiant tube-heating system needed to heat a particular area or building, the heat loss value must be determined. To do this, some basic building specifications are needed:

- What desired indoor temperature do you wish to maintain?
- Where is the building located?
- Is the building or space insulated?
- Does it have windows or exposed walls?
- What's the size of the area requiring heat?
- Will the building use a mechanical system for exhaust or infiltrated air?

As a full-service heating and air-conditioning supplier, the Clover Corporation takes pride in providing customers with a heat loss value and system layout that will provide

the necessary information for a well-designed installation. One that you and your customer will enjoy for the life of the equipment. One that will bring you repeat customers when it's time for replacement and new customers because they heard your customer was thoroughly satisfied with his installed system.



The **Spot Bar and Grill** in Tolland, CT is known for its great food and drinks. Earning a 5-star rating for its juicy burgers, crispy wings and fabulous appetizers, the SPOT draws plenty of customers in with a heated, comfortable atmosphere provided by the Omega II infrared system by Combustion Research Corporation.

**Close Harbor Seafood** in Southington, CT is another restaurant that added infrared heat for diner's comfort.

'Dining out' has not only grown as a preference since the Pandemic, it's increased business for the restaurants that had the foresight to add an extended outdoor area to eat.

Visit our photo gallery of case histories to see even more restaurants that have moved up to infrared heating on the web at [www.clover-corporation.com](http://www.clover-corporation.com).

